

# THE EPIC CHALLENGE

Let your **built environment** challenge spark its own solution

**Unlock the transformational benefits of digitisation to the design, construction, management and maintenance of your built environments, by making your real-world challenge the focal point that unites the unique mix of digital innovators and stakeholders required to solve it.**

**Creating the robust data solutions to enable the game-changing decision making that will revolutionise your built environments at scale, requires unprecedented orchestration of diverse stakeholders and the hottest tech thinkers and creators. So why not let your Firebox Challenge ignite the co-ordination and collaboration necessary to start delivering the more efficient, sustainable, and resilient built environments of tomorrow?**

## Which area will inspire your Firebox Challenge?

### 1 Climate Resilience and Nature Recovery

- Integrate climate resilience data into urban planning to build communities capable of withstanding extreme weather events.
- Use ecological data to design urban spaces that promote biodiversity and nature recovery.

### 2 Major Planning Reforms

- Streamline planning processes through centralized data sharing, enhancing transparency and efficiency.
- Incorporate predictive analytics to forecast future housing needs and urban growth patterns.

### 3 Construction and Project Management

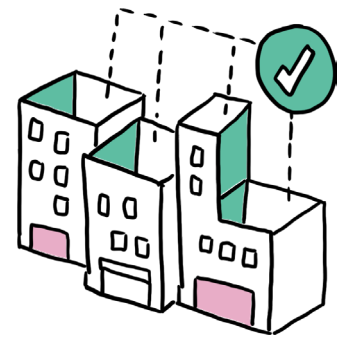
- Building Information Modeling (BIM) can enable more efficient project planning, design, and construction by providing a digital representation of the physical asset or facility – identifying and visualizing its characteristics or functions.
- Advanced cyber-physical technologies such as robotics can enhance construction processes, improving precision and reducing costs.

### 4 Infrastructure Management and Operational Efficiencies

- Smart Building Management Systems can monitor and control building operations in real-time, leading to improved operational efficiencies, reducing costs and energy consumption.
- Data analytics and machine learning can enable predictive maintenance insights, which will anticipate future building or equipment failures and creating efficiencies in scheduling repairs.
- Conducting energy audits can help identify areas where energy is being wasted and implement actions to reduce or eliminate waste within buildings and infrastructure.

### 5 Health and Safety

- Environmental Monitoring: Sensors can detect and monitor air quality, temperature, and humidity, ensuring a healthy indoor environment.
- Digital tools can enhance safety protocols on building sites and roads, by monitoring compliance and identifying potential hazards.



**Be part of Gemini Firebox**

To discuss taking part in the Gemini Firebox programme,  
email [Ryan.Goodman@cp.catapult.org.uk](mailto:Ryan.Goodman@cp.catapult.org.uk)

